

ROOM 79

Ashbee

EN / Sofa made of solid wood and covered with polyurethane foam. Buttoned seat cushion. Solid wood plinth available in all finishes. Available in custom measures.

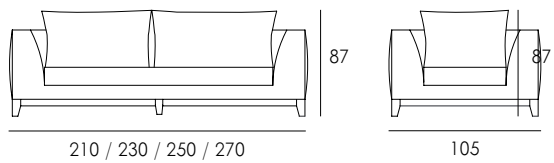
SP / Sofá realizado en madera maciza y cubierto con espuma de poliuretano. Almohadon de asiento abotonado. Zócalo en madera maciza disponible en todos los acabados.

FR / Canapé en bois massif recouvert de mousse polyuréthane. Coussin de siège boutonné. Socle en bois massif disponible dans toutes les finitions et pour fabrication sur mesure.



DIMENSIONES · SIZE · DIMENSIONS

REF: 9001 - 105 cm | REF: 9002 - 210 cm | REF: 9003 - 230 cm
REF: 9004 - 250 cm | REF: 9005 - 270 cm



Ashbee



WOOD FINISHES · ACABADOS DE MADERA · FINITIONS EN BOIS

ASH



BEECH



BLACK



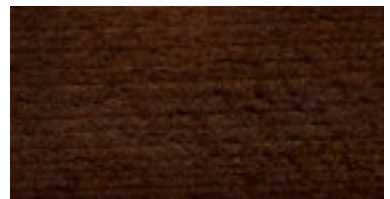
CHERRY



DARK OAK



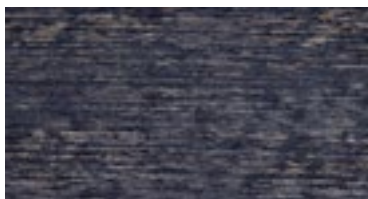
DARK WALNUT



EBONY



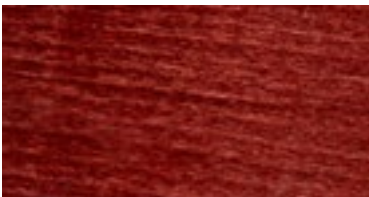
GRAPHITE



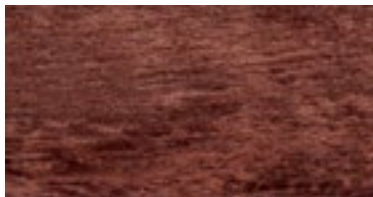
LIGHT OAK



MAHOGANY



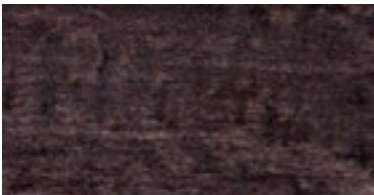
MIXED



N-3



WENGUE



OVERVIEW

Room 79 is a company manufacturing and designing seats and contract furniture. We produce high quality furniture that meets the comfort and design required by our clients.

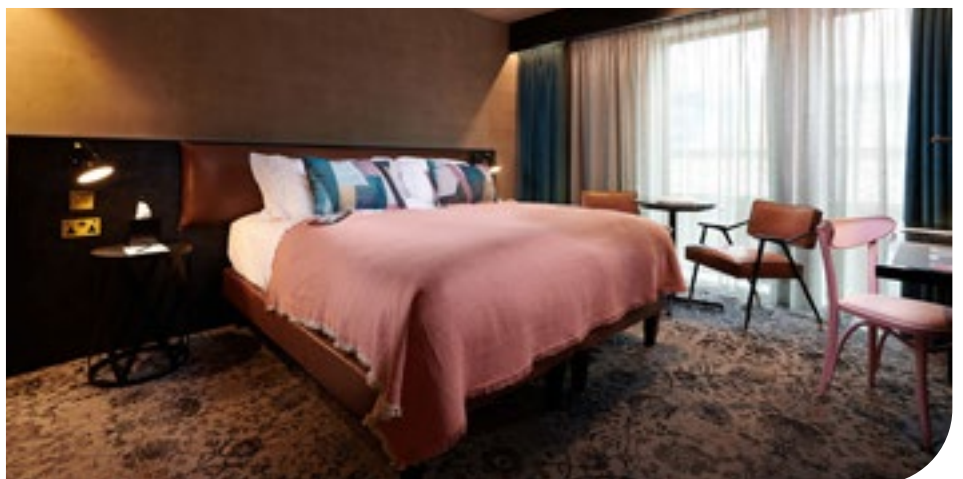
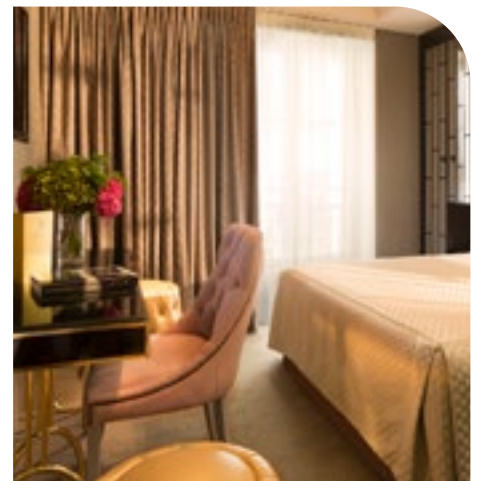
Our experience of over 15 years in the high end contract allows us to understand the needs of each project in terms of quality, price and attention to details. We are in permanent contact with our customers to make sure these details are respected and made according to the client needs.

Together with our own collections, we offer a tailor made service, which offers the possibility of adapting our products to the particular requirements of a project. Our team will work with designers and architecture firms to achieve a tailor made product and ensure that our standards of craftsmanship, ergonomics and comfort are maintained. From minor changes in measurements, details on upholstery or special finishes, to the creation of a completely customized piece, we can create a product to meet the demands of your project; we can provide proposals for sketches, renderings, CAD drawings and samples of materials.



LATEST PROJECTS

Silken Berlaymont, Brussels, Belgique
Grantley Hall 6* Hotel and Spa, Ripon, UK
Le Gray, Aqaba, Jordan
Restaurant Au crocodile, Strasbourg, France
Hotel & Spa Julien, Fouday, France



LATEST PROJECTS

The Clifton Hotel, Folkestone, UK

Movenpick Neuilly, Paris, France

Restaurant Hubertusstube, Hotel Alte Post, Bonaduz, Switzerland

DoubleTree, Hilton Hotel, Dockland, London

La Résidence du Port, Marsella, France

Marriot Victoria & Albert Hotel, Manchester, UK

