

ROOM **79**

# Santamaría

EN / Sofa made of solid wood and covered with polyurethane foam. Metallic leg available in black and chrome. Available in custom measures.

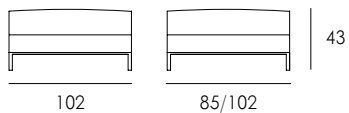
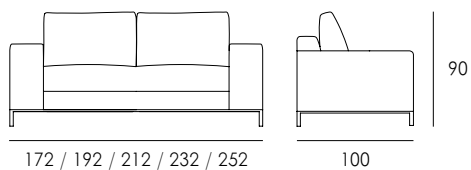
SP / Sofá realizado en madera maciza y cubierto con espuma de poliuretano. Pata metálica disponible en negro y cromado. Disponible en fabricación a medida.

FR / Canapé en bois massif recouvert de mousse polyuréthane. Pied métallique disponible en noir et chrome. Disponible en fabrication sur mesure.

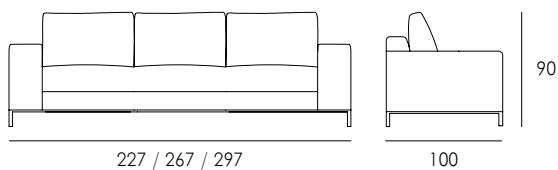
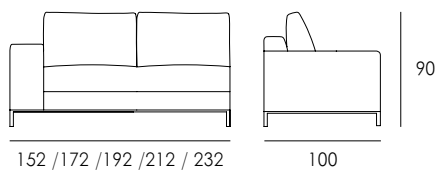


## DIMENSIONES · SIZE · DIMENSIONS

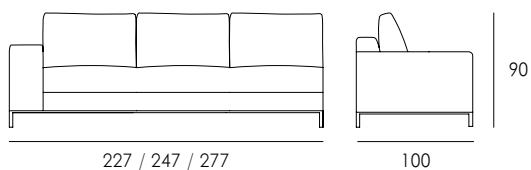
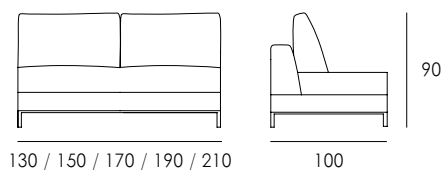
REF: 9170 - 102 cm | REF: 9171 - 102 cm

REF: 9172 - 172 cm | REF: 9173 - 192 cm | REF: 9174 - 212 cm  
REF: 9175 - 223 cm | REF: 9176 - 252 cm

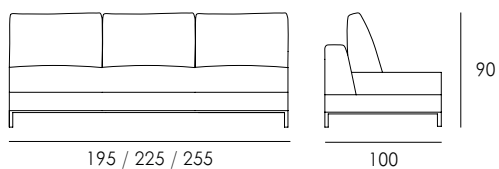
REF: 9177 - 227 cm | REF: 9178 - 267 cm | REF: 9179 - 297 cm

REF: 9180 - 152 cm | REF: 9181 - 172 cm | REF: 9182 - 192 cm  
REF: 9183 - 212 cm | REF: 9184 - 232 cm

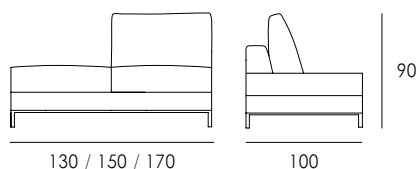
REF: 9185 - 227 cm | REF: 9186 - 247 cm | REF: 9187 - 277 cm

REF: 9188 - 130 cm | REF: 9189 - 150 cm | REF: 9190 - 170 cm  
REF: 9191 - 190 cm | REF: 9192 - 210 cm

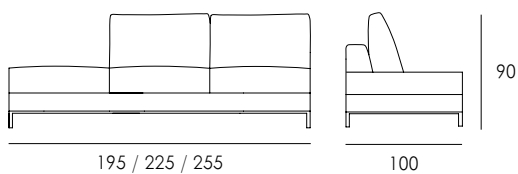
REF: 9193 - 195 cm | REF: 9194 - 225 cm | REF: 9195 - 255 cm



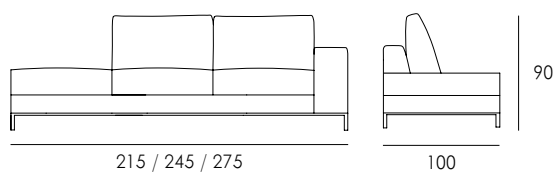
REF: 9196 - 130 cm | REF: 9197 - 150 cm | REF: 9198 - 170 cm



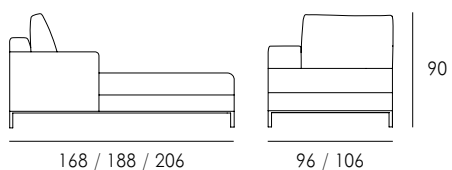
REF: 9199 - 195 cm | REF: 9200 - 225 cm | REF: 9201 - 255 cm



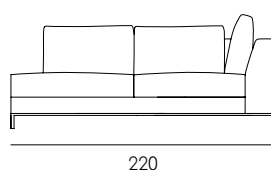
REF: 9202 - 215 cm | REF: 9203 - 245 cm | REF: 9204 - 275 cm



REF: 9205 - 168 cm | REF: 9206 - 188 cm | REF: 9207 - 206 cm

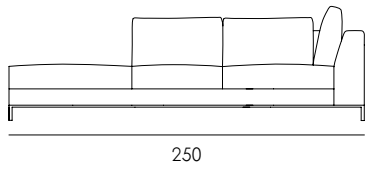


REF: 9208 - 220 cm

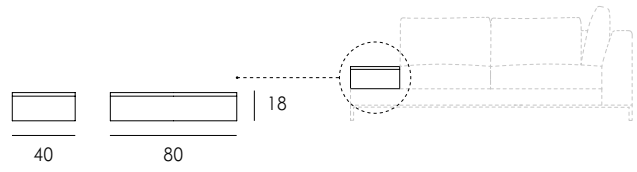


DIMENSIONES · SIZE · DIMENSIONS

REF: 9209 - 250 cm



REF: 9210



# Santamaría



WOOD FINISHES · ACABADOS DE MADERA · FINITIONS EN BOIS

ASH



BEECH



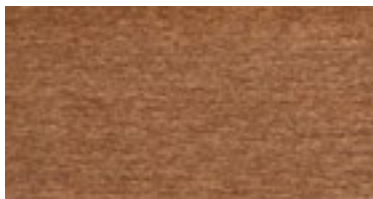
BLACK



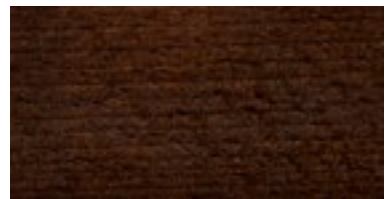
CHERRY



DARK OAK



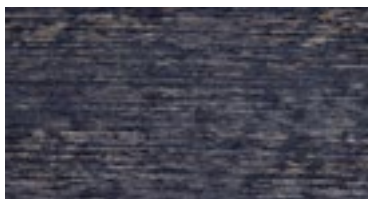
DARK WALNUT



EBONY



GRAPHITE



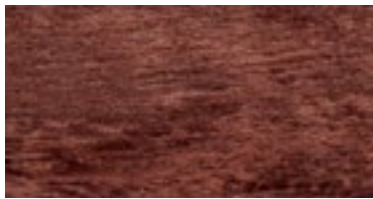
LIGHT OAK



MAHOGANY



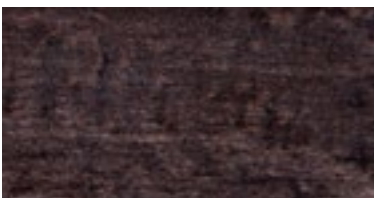
MIXED



N-3



WENGUE

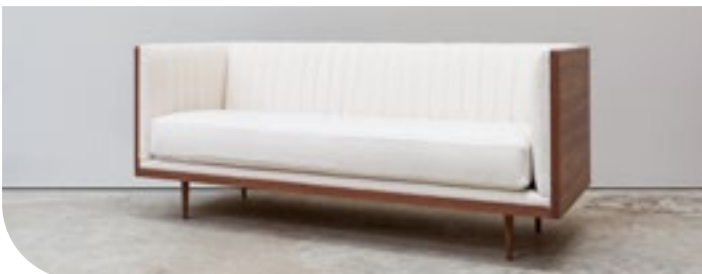


## OVERVIEW

Room 79 is a company manufacturing and designing seats and contract furniture. We produce high quality furniture that meets the comfort and design required by our clients.

Our experience of over 15 years in the high end contract allows us to understand the needs of each project in terms of quality, price and attention to details. We are in permanent contact with our customers to make sure these details are respected and made according to the client needs.

Together with our own collections, we offer a tailor made service, which offers the possibility of adapting our products to the particular requirements of a project. Our team will work with designers and architecture firms to achieve a tailor made product and ensure that our standards of craftsmanship, ergonomics and comfort are maintained. From minor changes in measurements, details on upholstery or special finishes, to the creation of a completely customized piece, we can create a product to meet the demands of your project; we can provide proposals for sketches, renderings, CAD drawings and samples of materials.



## LATEST PROJECTS

Silken Berlaymont, Brussels, Belgique  
Grantley Hall 6\* Hotel and Spa, Ripon, UK  
Le Gray, Aqaba, Jordan  
Restaurant Au crocodile, Strasbourg, France  
Hotel & Spa Julien, Fouday, France



## LATEST PROJECTS

The Clifton Hotel, Folkestone, UK

Movenpick Neuilly, Paris, France

Restaurant Hubertusstube, Hotel Alte Post, Bonaduz, Switzerland

DoubleTree, Hilton Hotel, Dockland, London

La Résidence du Port, Marsella, France

Marriot Victoria & Albert Hotel, Manchester, UK

